

Energy Logic

Clean Burn

CABINET



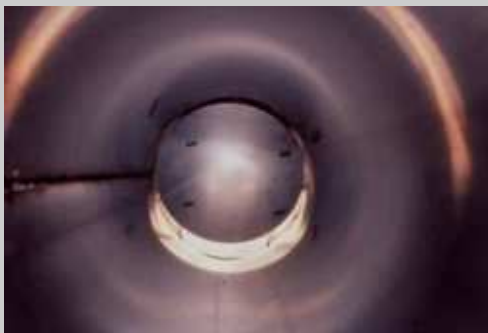
Single-pass Blast tube design made of lighter weight 18 ga. stainless steel metal, does not allow for efficient heat exchange. Its poor design includes a weld along the side of the tube which opens it up to potential heat stress damage.



Energy Logic furnace cabinet



Energy Logic's light weight blast tube.



Energy Logic's flame target is light weight and difficult to remove and replace.



The combustion chamber is made of heavier, thicker 12 ga. carbon steel resulting in extra durability and more efficient heat exchange. On average, our furnaces weigh up to 175 lbs. more than many competitive furnaces.



Clean Burn furnace use several innovative multi-pass heat exchanger methods, depending on the size of the model, to ring out every last BTU of heat for your shop, while venting substantially cooler gases through the chimney than its competitors.

A Clean Burn Heat Exchanger provides approximately 200% more surface area for capturing combustion heat. You get more heat from less oil.



As it's furnace target Clean Burn uses an Energy Retention Plate made of innovative

heat resistant material. It retains heat for better heat transfer, protects the furnace, and is easily replaced. This view is looking down the heat exchanger with the Energy Retention Plate removed and in the foreground. Arrows point out easy attachment points.

## BURNER



Modified Becket #2 oil burner converted for waste oil which makes for increased maintenance.



The Clean Burn burner is engineered from the ground up exclusively to burn used oils, and burns standard fuel oil for added versatility. A high quality on-board air compressor is optional, however most customers prefer to use their shop air.



Air compressor included -- considered noisy by some and a potential maintenance issue.



The pre-heater block heats oil and air to the same precise temperature for efficient combustion. Like its heat exchanger, it too uses a multi-pass heating approach.

(no image available)



Swing-away burner design provides quick, easy access to the combustion chamber. No need to disconnect oil, air and electrical lines. This unique modular design makes service faster and easier.

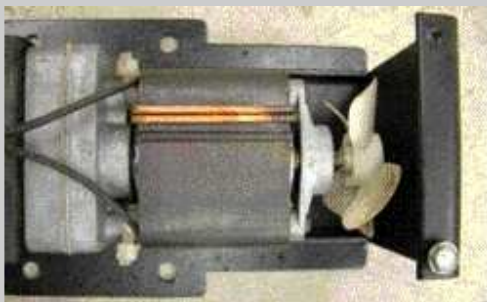
### OIL PUMP



Gravity-fed flooded suction pump mounts below the oil tank. If pump seals fail or are damaged, a large oil spill from the tank could occur. Also this pump design may limit the size of the waste oil storage tank.



The Clean Burn Pump features heavy-duty steel gears encased in an oil bath, and precision assembly to help ensure a long reliable service life. The oil flow rate is consistent because precise gear ratios and pump speeds are set for each individual furnace. A correct flow rate is maintained no matter what type of oil and viscosity is used, insuring optimum performance.



Light weight pump motor uses a plastic fan. The distance from the pump to the furnace is not to exceed 30 feet, which could limit ideal furnace location.



This brawny, reliable Clean Burn oil pump allows the furnace to be installed up to 300 ft. from the oil storage tank. It also permits the use of an outside storage tank where, in colder temperatures, many competitive pumps can't function. No competing waste oil

furnace can provide such flexibility and convenience, from the initial installation to its day-to-day use.

#### SERVICEABILITY



Clean Burn's swing-out cabinet door makes cleaning and service easy.

#### SERVICE

Local service may be available. Contact your local sales representative for details.

Clean Burn has the largest service and distributor network in the industry, providing dependable installation and after-sale service and parts support.

### **Sandri Clean Burn**

78 Main Street

Northfield, MA 01360

Toll Free: 1-800-882-4511 Ext 194 or 188

E-mail: [cleanburn@sandri.com](mailto:cleanburn@sandri.com)