

STIEBEL ELTRON

Simply the Best

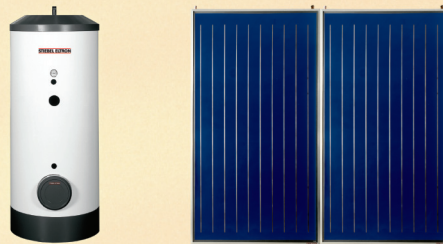
SOLAR WATER HEATING PACKAGES

SOLKIT 1



SB 200 1 SOL 25+

SOLKIT 2



SBB 300 Plus 2 SOL 25+

SOLKIT 3



SBB 400 Plus 3 SOL 25+

SOLAR PUMP PACKAGE



SOM 6

FLOWSTAR
PUMP STATION



*SOLkit 2 & SOLkit 3

SOL 25 PLUS complies
with ISO 9806



ISO 9001
CERTIFIED



Leaders in Thermal
Solar Technology

TOLL FREE 800.582.8423



www.stiebel-eltron-usa.com

info@stiebel-eltron-usa.com

STIEBEL ELTRON
Simply the Best

STIEBEL ELTRON

SOLAR WATER HEATING PACKAGES

	SOLKIT 1	SOLKIT 2 	SOLKIT 3 
Collector:	1 SOL 25 PLUS	2 SOL 25 PLUS	3 SOL 25 PLUS
Tank:	1 SB 200 S (50 gal)	1 SBB 300 + (80 gal)	1 SBB 400 + (108 gal)
Pump Station:	1 Stiebel Eltron Flowstar Pump Station with SOM 6 Differential Controller		
Homeowner Price:	\$3547.01	\$5633.21	\$6944.21
Mounting Systems	for SOLKIT 1	for SOLKIT 2	for SOLKIT 3
Flush Vertical:	\$215.67	\$311.18	\$599.27
Flush Horizontal:	\$311.18	\$622.36	\$933.54
Tilt Vertical:	\$366.63	\$462.14	\$773.16
Tilt Horizontal:	\$462.14	\$924.28	\$1386.42
45° Vertical:	\$388.79	\$484.30	\$806.40
45° Horizontal:	\$373.12	\$746.24	\$1119.54
60° Tilt	\$407.41	\$502.92	\$834.33

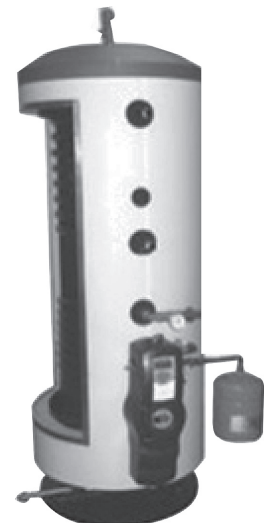
The SOL 25 PLUS is a high performance solar collector featuring a highly selective Bluetec CERMET ceramic/metal coating, an anodized aluminum body, and low iron tempered glazing.

The SB 200 is a porcelain enamel coated steel single heat exchanger tank with 2 inches of foam insulation.

The SBB 300+ and 400+ tanks are porcelain enamel coated steel and have dual heat exchangers and 3 inches of foam insulation for very low standby heat loss.

The pump stations include a circulator, 2 boiler drains, an expansion tank, a pressure relief valve, a check valve, a pressure gauge, a return line thermometer, an air vent, a Stiebel Eltron controller and sensors, and are hard piped to the tank.

These packages do not include installation or the pipe needed to connect the panels to the tank or the pipe insulation as these components will vary based on site requirements.



Flowstar Pump Station mounted on a cutaway SBB 300+ tank